



A Khalil – MF Carette

Femme de 85 ans

**Bilan cérébral et corps entier d'un cancer
bronchique**



-1024.00
mm Z: -720.06 mm

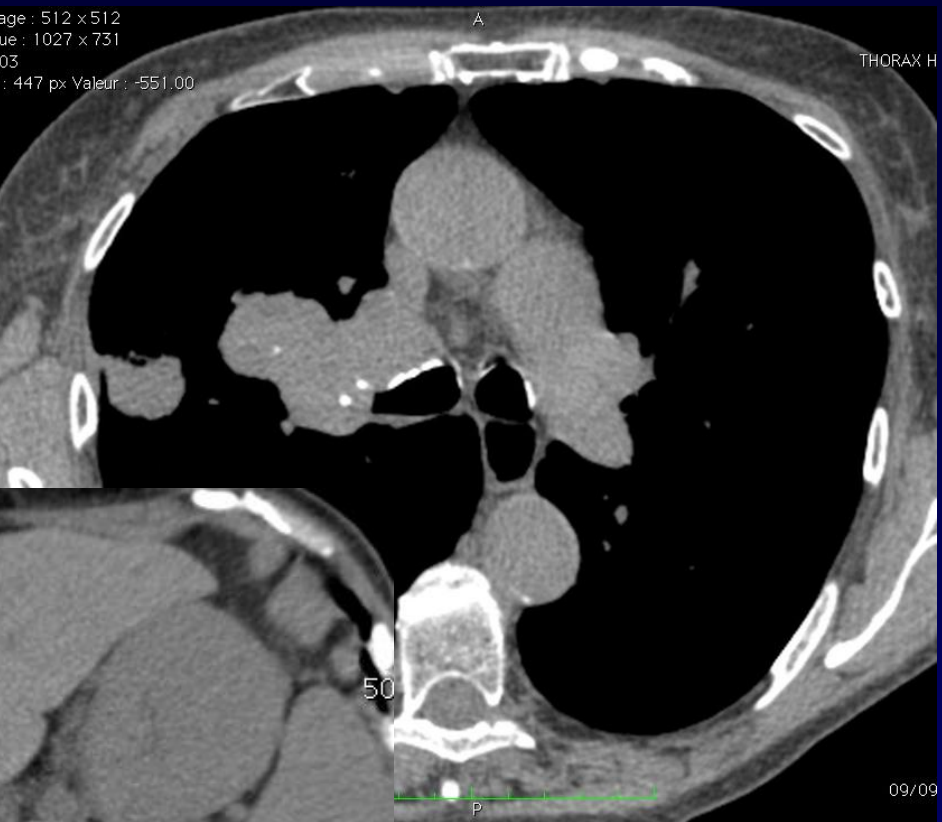
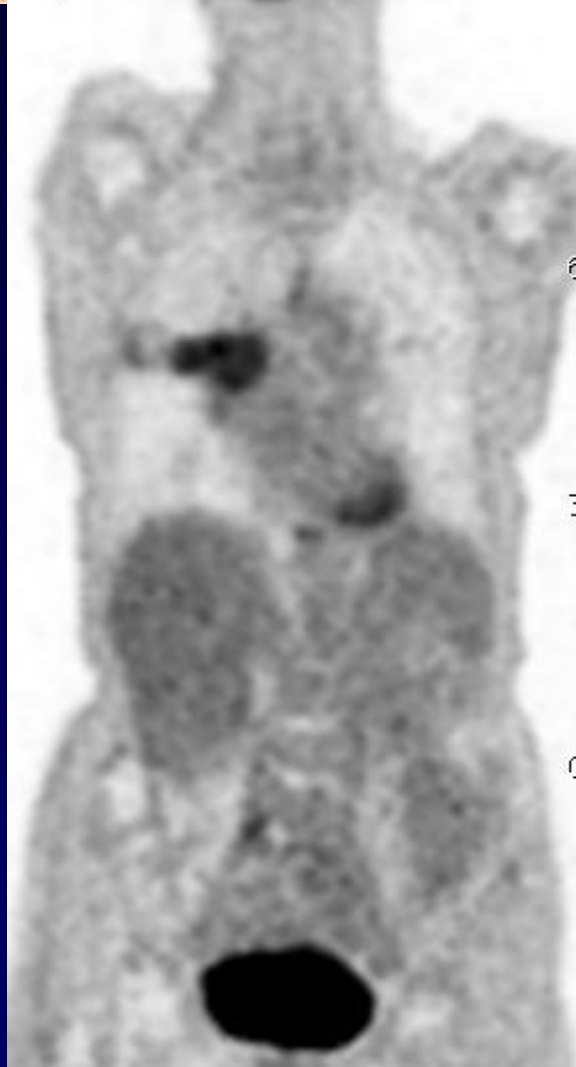




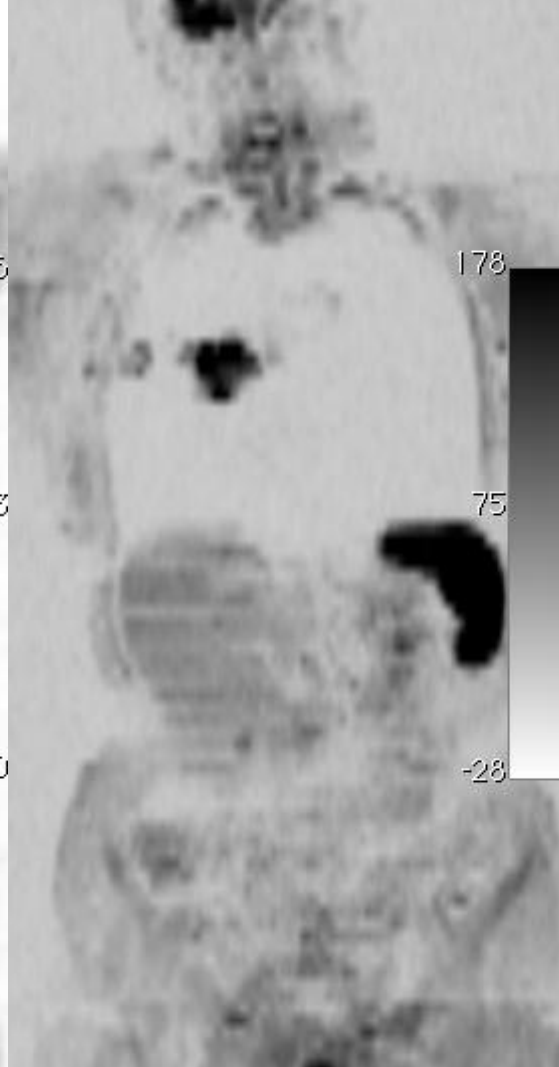
Image : 144 x 232
 Taille : 500 x 731
 F : 6.3399
 (0) : 38 % (6.34)
 16 px Valeur : 0.40



TEP

Angle : 0
 (A -> P)
 10 mm Position : 123.41 mm

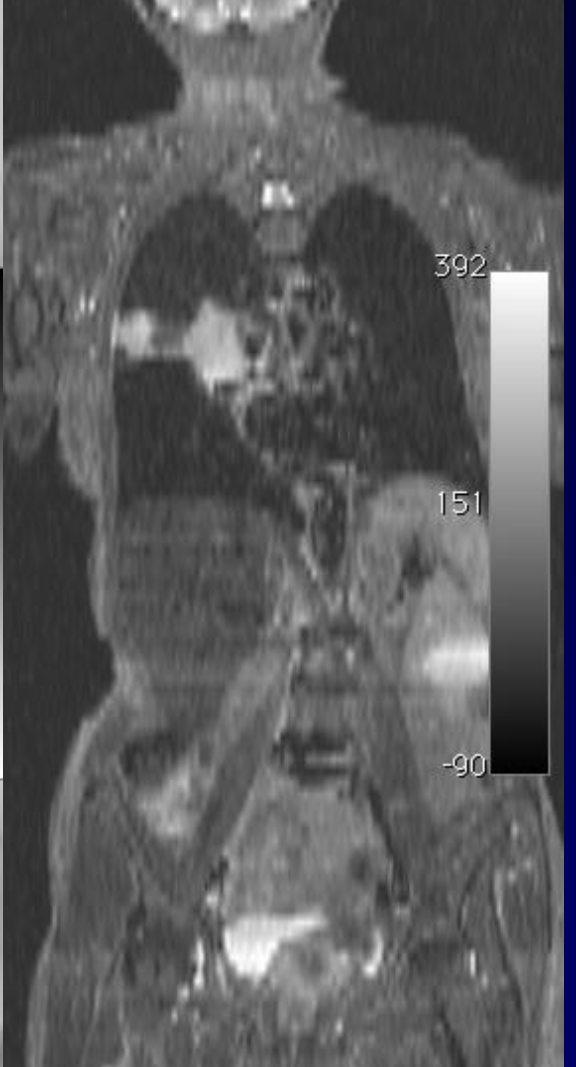
l'image : 256 x 128
 la vue : 376 x 718
 Body/LF : 207
 px Y : 119 px Valeur : 23.00



DWI

47% Angle : 0
 17/0-126/256 (A -> P)
 in : 15.47 mm Position : -5.79 mm

200903
 85 y,
 LF : 481

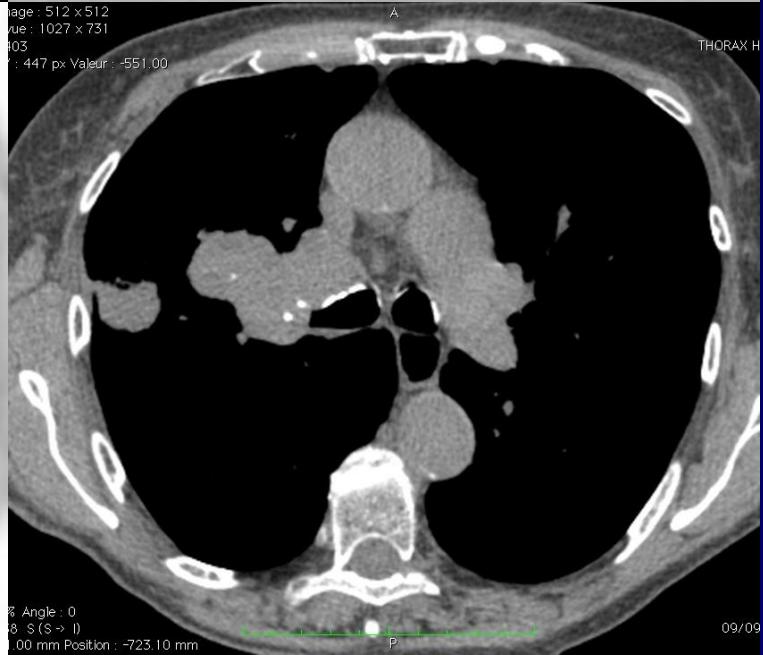
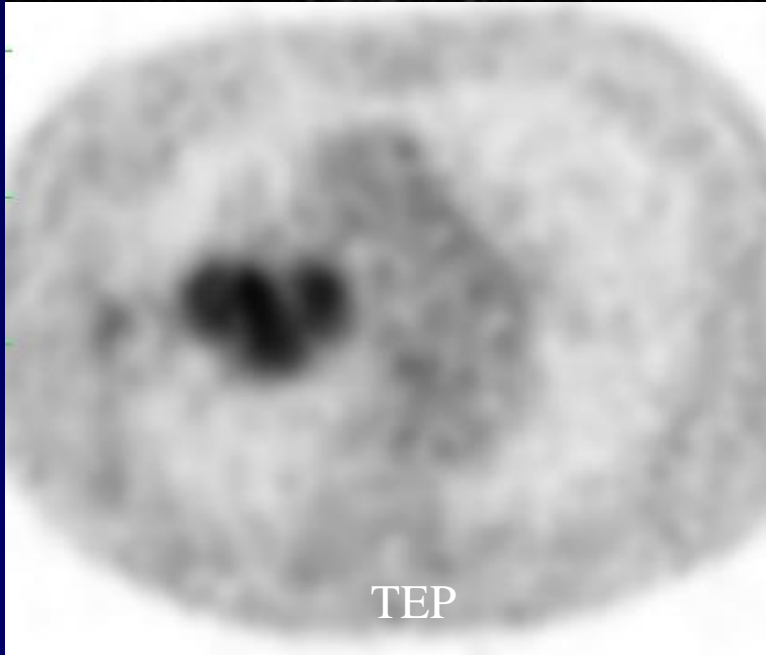
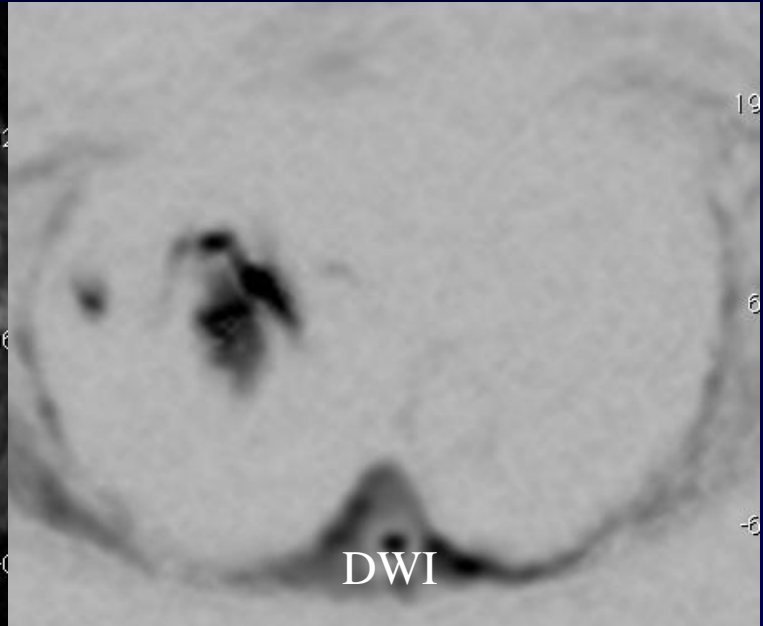
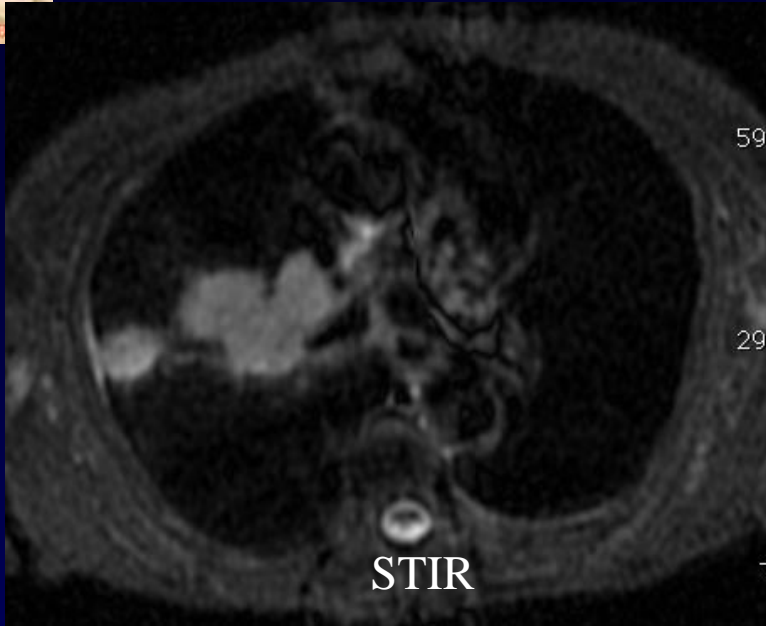


STIR

FS72% Angle : 0
 11/09/09 14:5/512 (A -> P)
 in : 859.40 μm Position : 15.26 mm

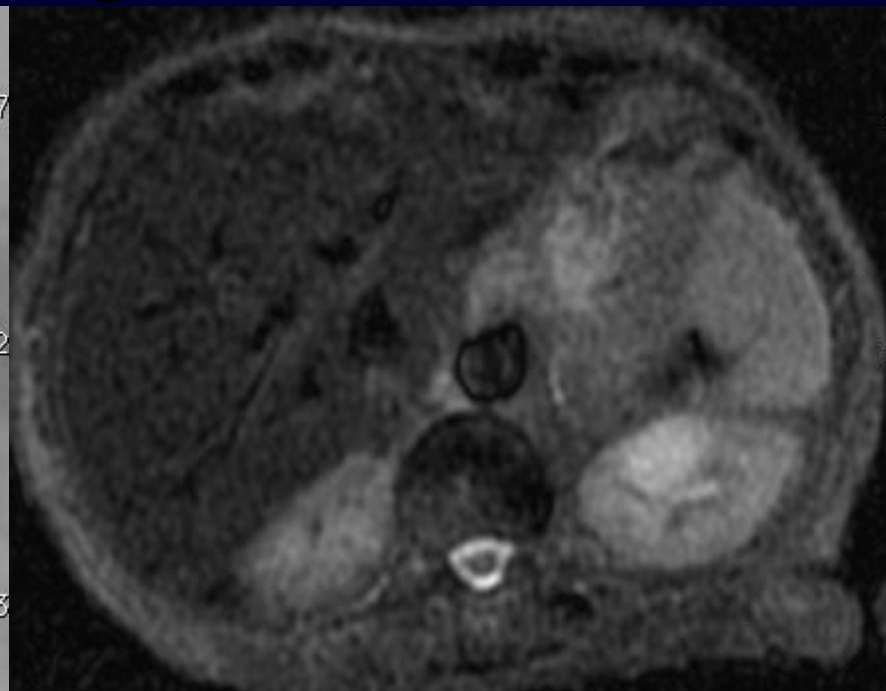
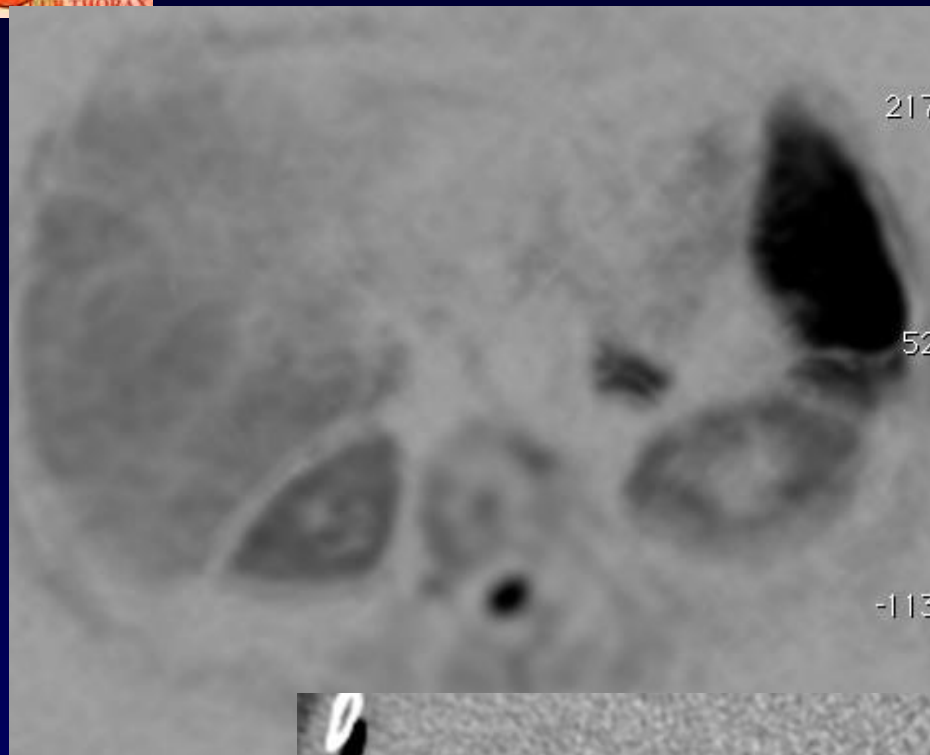
20090380
 85 y , 8
 CORPS ENTIER CRANI
 44
 1

La masse





La surrenale gauche





Diagnostic ?



Diagnostic

Faux positif de l'IRM de diffusion sur la SR gauche

En STIR: une SR tumorale apparaîtrait en hyper signal

Dans ce cas: absence d'hyper signal en raison du contenu graisseux de la SR gauche en faveur de sa nature bénigne